

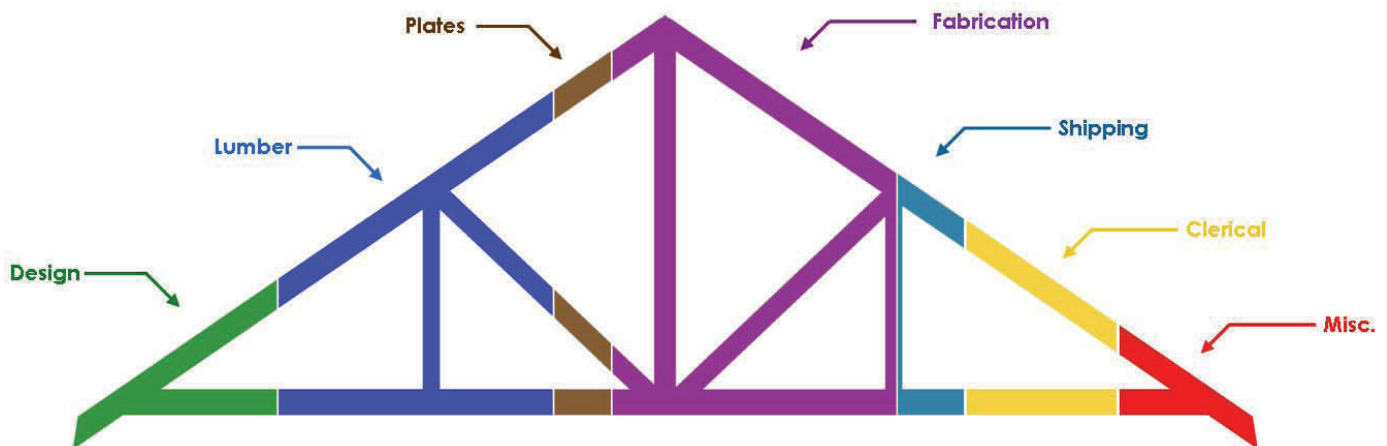
PROLINES

December 2007

The Newsletter for the Professional Builder

ROOF TRUSS BREAKDOWN

The largest component any individual roof truss from a visual perspective is, of course, the dimension lumber that is used to make the various posts, webs and chords. Although the lumber market has softened over the past year, the grades used for truss fabrication such as **MSR (Machine Stress Rated; 1650 and 2100)** are premium priced products and not subject to the larger swings of conventional grades such as, #2&Btr. When a lesser grade such as #2&Btr. is acceptable in the engineered design, we must purchase a more expensive four square or higher quality export product, to ensure proper plate adhesion. Lumber with a certain amount of wane or other defects that may qualify under specific grading regulations, will simply not work in truss fabrication. Additionally, in order to operate with a reasonable degree of efficiency in the stocking, handling, and cutting the lumber components, longer length dimensions, for example, 18' and 20' lengths are purchased, and these lengths also carry a premium rate. Most importantly, there are many factors that determine the final cost of the engineered roof truss from the engineering and computer design applications, steel plating, precision cutting, fabrication, quality control, handling and delivery as well as the clerical and collection requirements that all businesses face. These machine and labour intensive activities actually compose the overwhelming majority of costs associated with the final product arriving at your job site. We have broken out the various factors for an approximation of their related input amounts.



SEASONS GREETINGS



The owners, management and staff at Davidson Enman Lumber Ltd. would like to extend to all our valued customers and PROLINES readers, best wishes for this holiday season. In lieu of sending out Christmas Cards, donations are being made to several local registered charities that provide a positive influence on the quality of life and care, in the communities we live and work in.

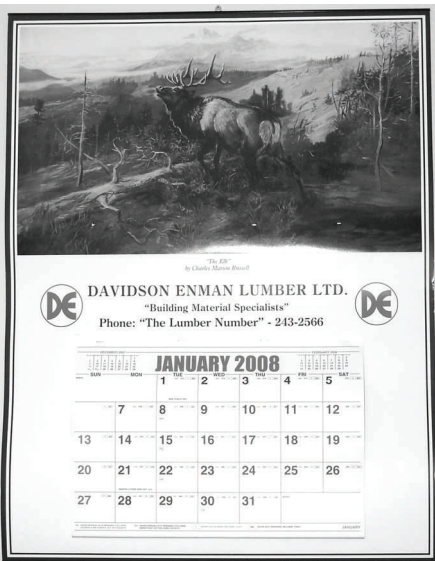


HOLIDAY HOURS

The following is our schedule during the 2007 Holiday Season.

Saturday December 22 - Closed
Sunday December 23 - Closed
Monday December 24 - Closed for Inventory
Tuesday December 25 - Closed
Wednesday December 26 - Closed
Thursday December 27 - Open regular hours
Friday December 28 - Open regular hours

Saturday December 29 - Closed
Sunday December 30 - Closed
Monday December 31 - Closed for Inventory
Tuesday January 1, 2008 - Closed



MARK YOUR CALENDARS

For more years than most of us can remember, we have provided our customers and friends with the best Wall Calendar made, as just another of our "specialty advertising" programs. It is extra large sized at 30" x 38" with easy to read and mark, monthly tear off sheets with sturdy metal frame top and bottom chords, back dropped with a western themed print by the late artist, Charles M. Russell. If you would like an edition reserved for your office, job shack job site trailer, boardroom, home, or cottage, please call our Calgary Office at 243 2566 and ask for one, but hurry, quantities are limited. If you are one of our many customers who have been regularly receiving one on a year to year basis it is likely that we have already reserved one, and you will soon be receiving yet another timely delivery from D&E.



A periodical publication by Davidson Enman Lumber Ltd.
Editor: Richard Stewart e-mail: rstewart@delumber.com